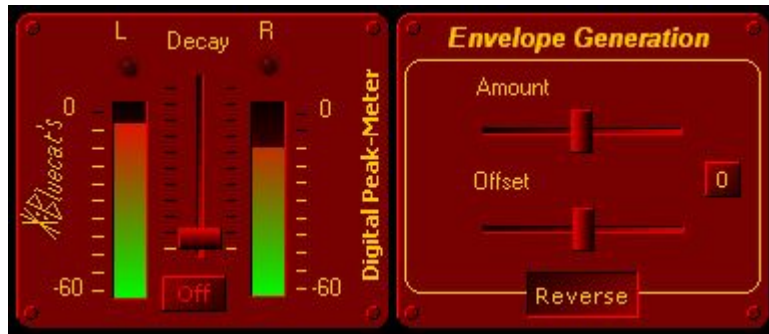


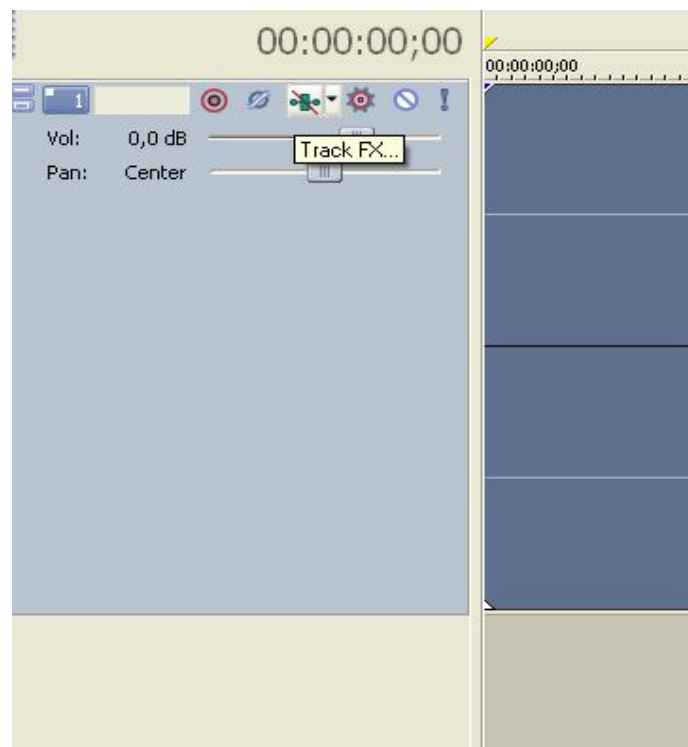
Blue Cat's Digital Peak Meter Pro (DPMP) Quick Start Guide for Sony Vegas 5

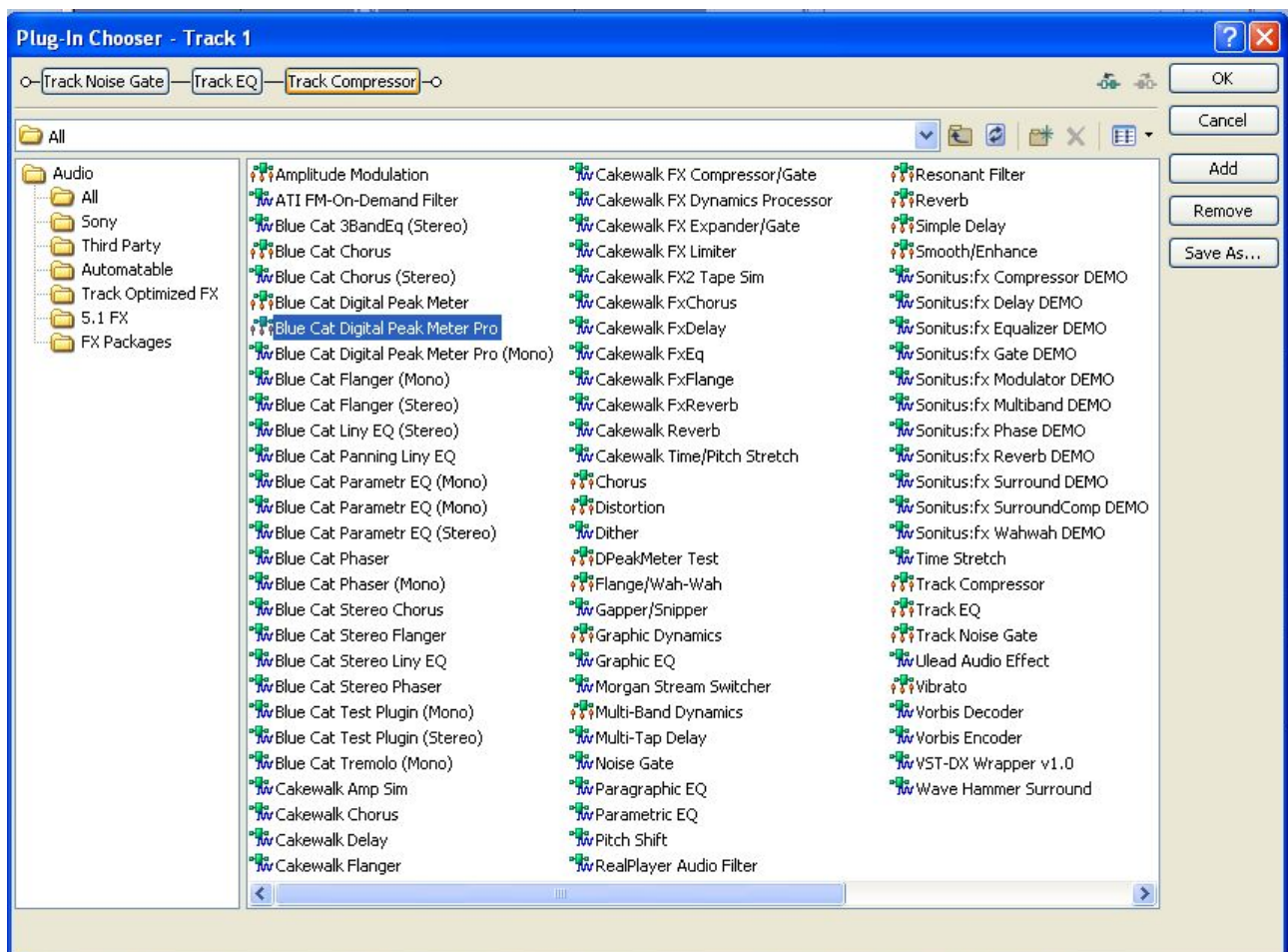
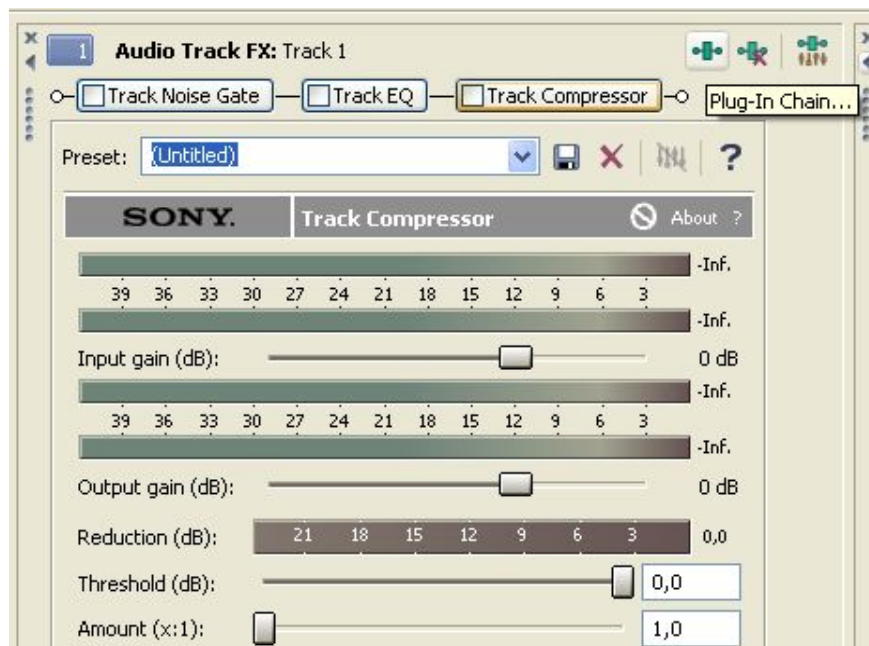
by Guillaume Jeulin
(Blue Cat's Music Software)
<http://software.bluecatonline.org>



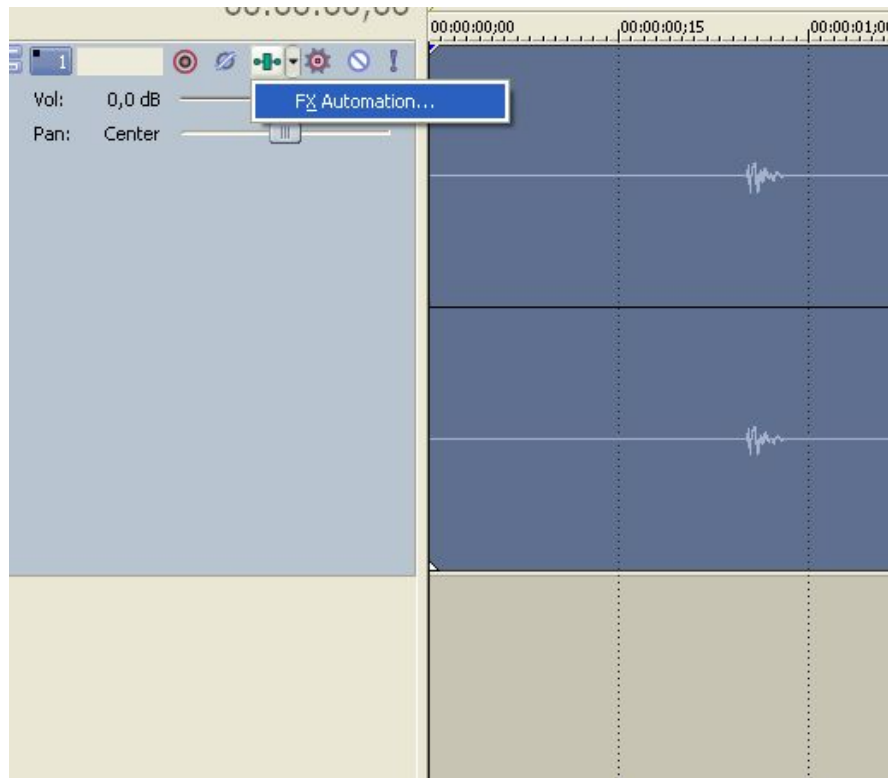
In this tutorial you will learn how to use Blue Cat's Digital Peak Meter Pro in Sony Vegas 5. You will record the peak envelope on a track and use the reversed curve to automate the parameter of another effect on another track.

Step 1: Insert Blue Cat's Digital Peak Meter Pro on your track:

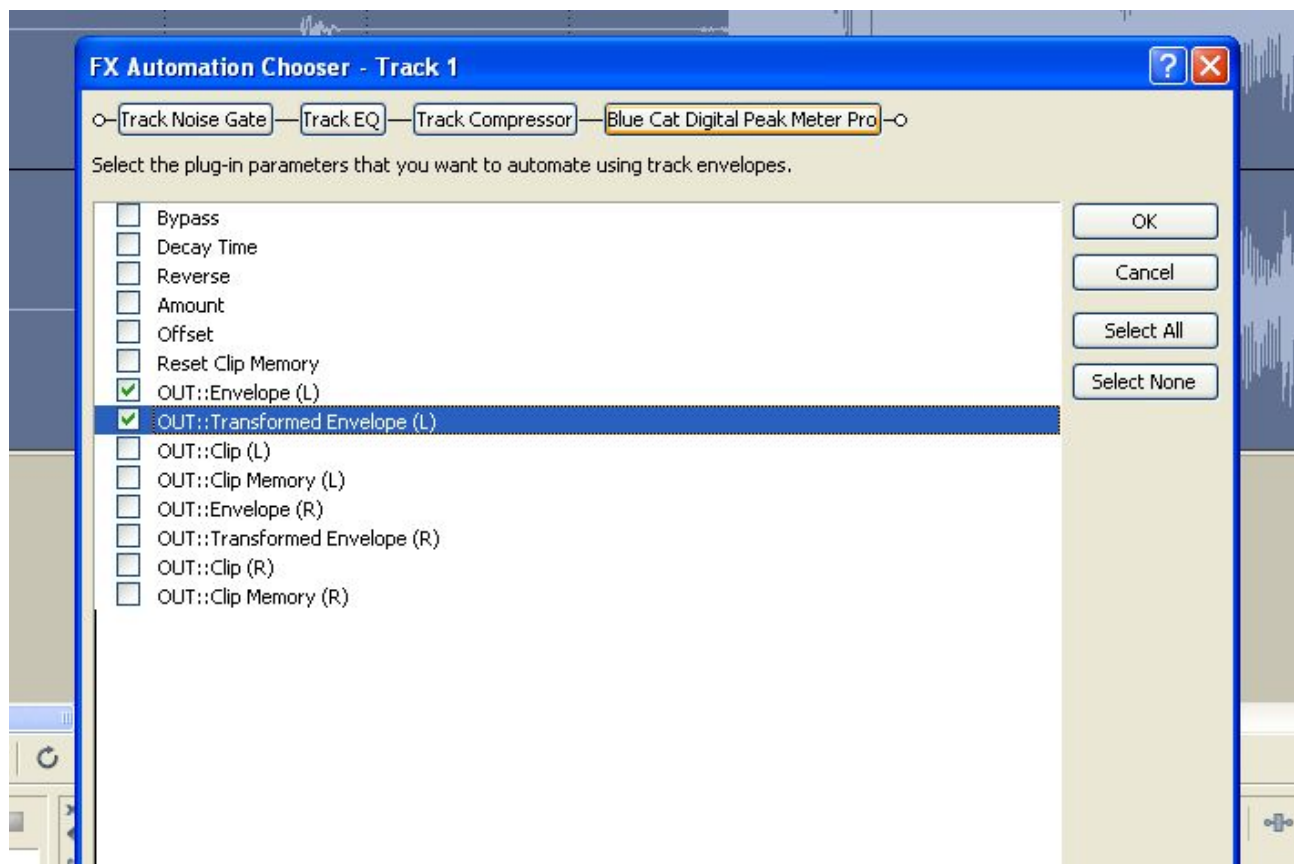




Step 2: Choose what automation curves you want to record

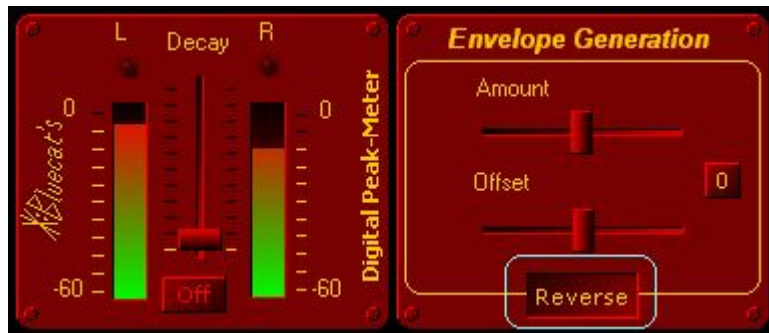


We choose here to record the left envelope and the left transformed envelope:



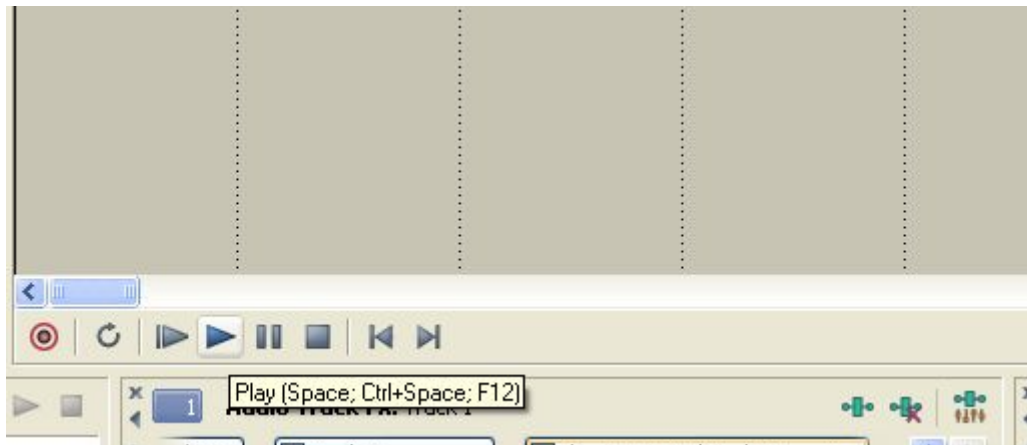
Step 3: Choose your Digital Peak Meter Pro options for the transformed envelope

We choose here to revert the envelope:



Step 4: Record automation envelopes

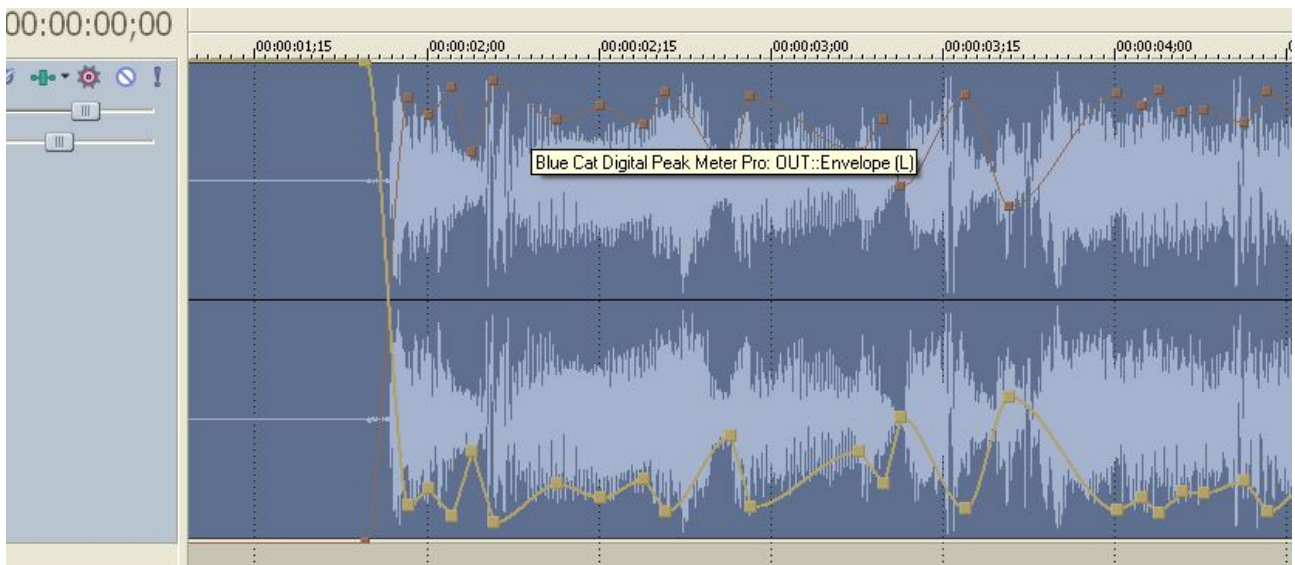
Simply click on the 'play' button:



Warning: due to a bug in Vegas the Graphic User Interface (GUI) of the Digital Peak Meter needs to be active when recording.

Step 5: See the result

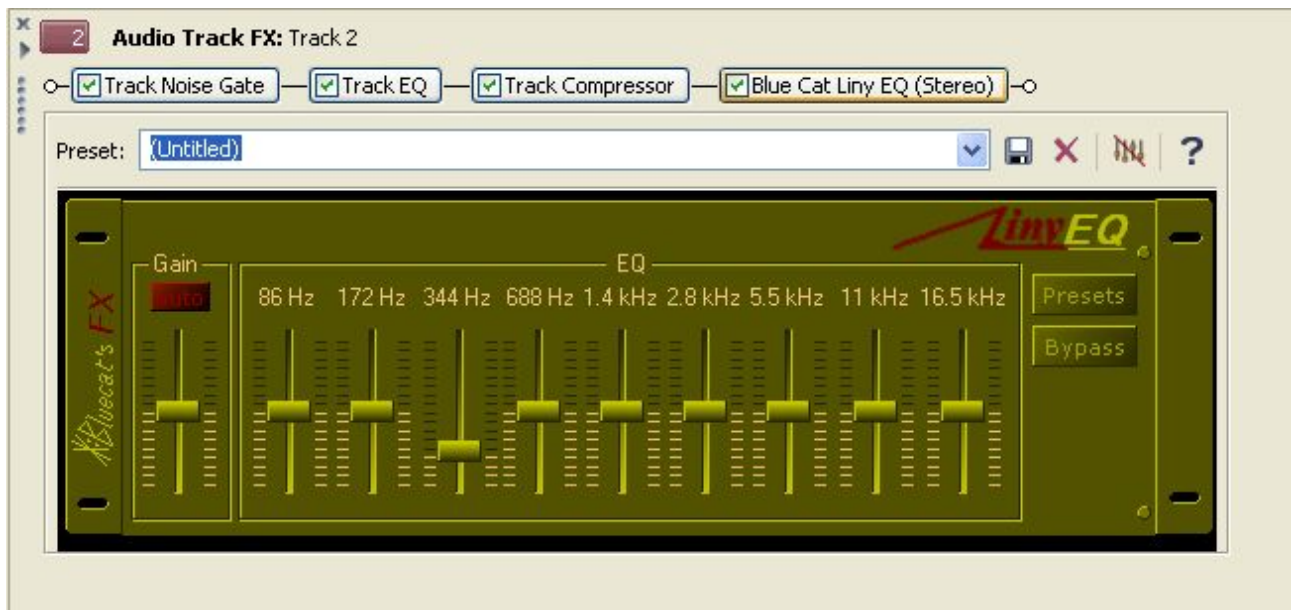
Here you are: you recorded the envelope and the reversed envelope of your audio signal.



You can now assign your envelopes to any parameter of any other effect (audio or not, in the same track or not).

Step 6: insert an effect and creates its automation curves for one parameter

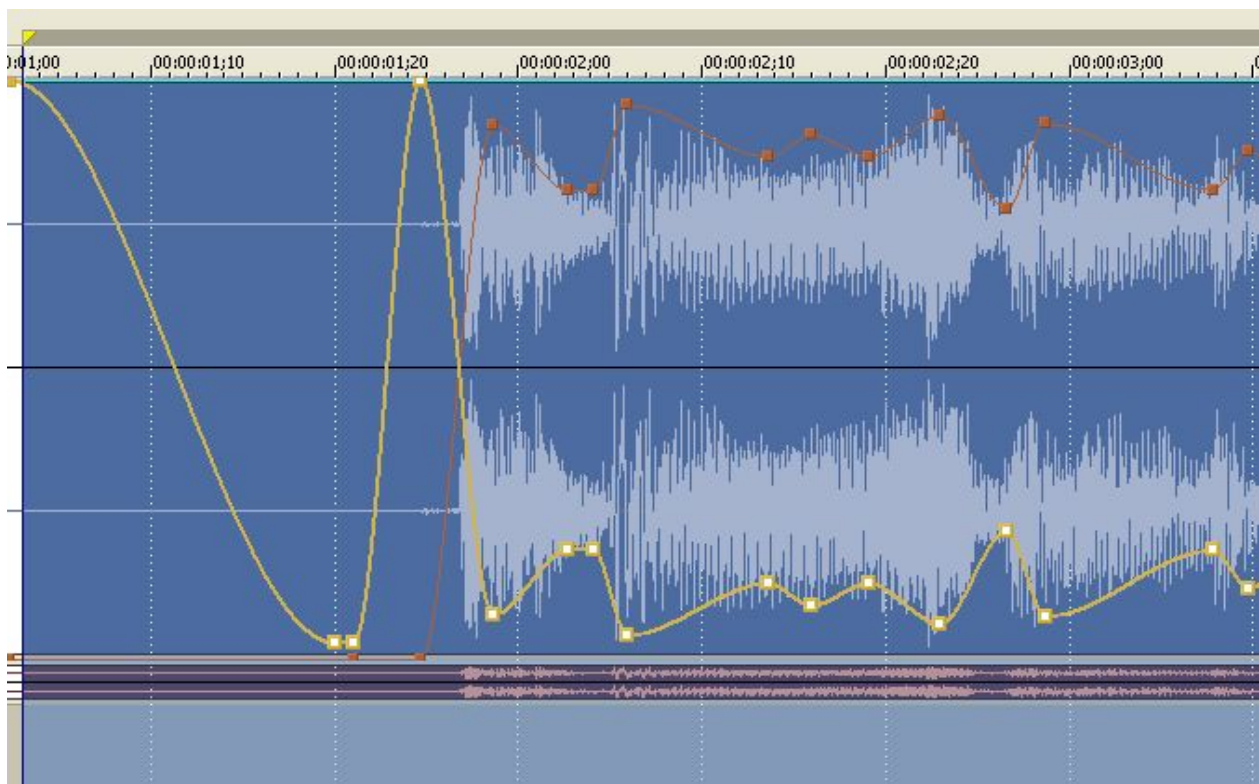
We choose here to create the envelope of the gain of one band of Blue Cat's Liny EQ on track2:



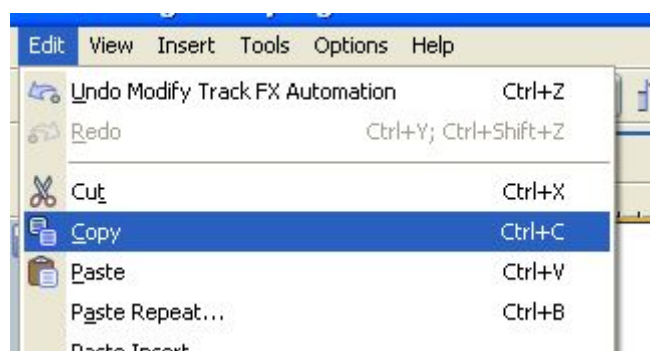
To insert the effect and create the automation envelope please follow the same steps as for the digital Peak Meter pro.

Step 7: Copy DPMP transformed envelope

Use the envelope editing tool to select the envelope and the time period you want to copy:



Copy (from the menu or Ctrl-C)

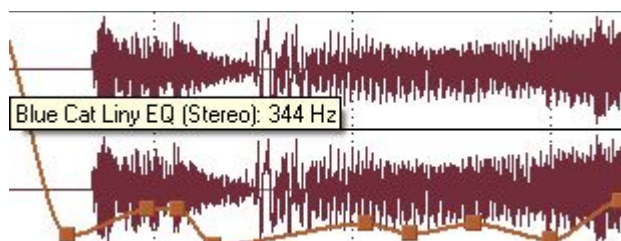


Step 8: Paste the transformed envelope on track 2

Select the parameter envelope you previously created:



Copy the envelope (CTRL-V or "Edit" Menu / Paste), and here you are:



You have assigned the reversed peak envelope of track 1 to track 2 Equalizer 344 Hz Band Gain. You have created a side chain multi-band compressor in a few clicks!

You can use the same method for any other parameter of any effect, for example use your audio track to control your video effects and thus have a perfect synchronization between your sounds and your video automatically.

Optimal Settings:

In order to reduce latency between recorded automation and the real audio track and improve overall automation recording precision, try to set the latency of your audio sound card to the minimum value acceptable by your system.

Additional information:

For more information about Sony Vegas 5 automation support and GUI please read you user's manual.

For more information about Blue Cat's Music Software Products please visit our website at <http://software.bluecatonline.org>.

Blue Cat's Digital Peak Meter Pro and Blue Cat's Liny EQ are Blue Cat's Music Software Products. All rights reserved.
Copyright (c) 2004-2005 Guillaume Jeulin.